

 coolsculpting® ELITE

GET THE ELITE *Experience*

Eliminate fat with
the most advanced
CoolSculpting® system yet.

Allegra was treated
with **CoolSculpting Elite**
on her lower abdomen.

Results may vary.

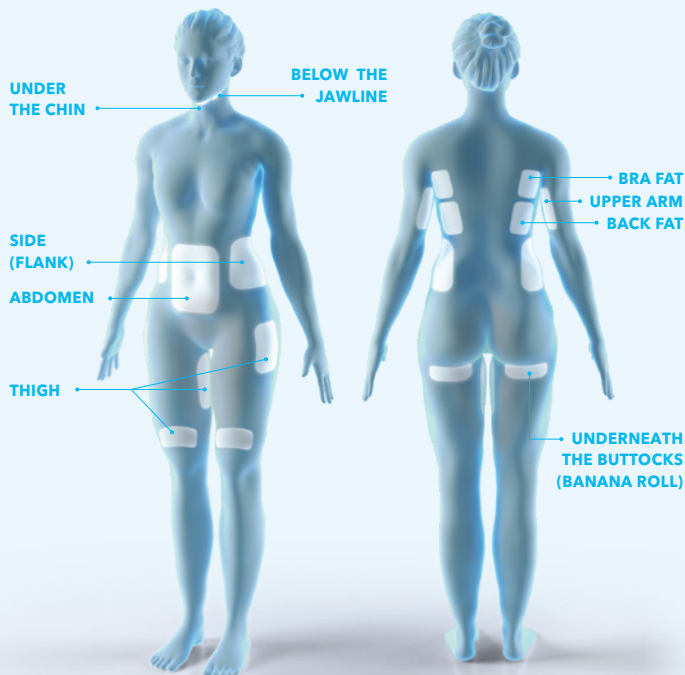
Uses

CoolSculpting® Elite is FDA-cleared for the treatment of visible fat bulges in the submental (under the chin) and submandibular (under the jawline) areas, thigh, abdomen, and flank, along with bra fat, back fat, underneath the buttocks (also known as banana roll), and upper arm. It is also FDA-cleared to affect the appearance of lax tissue with submental area treatments. **CoolSculpting® Elite** is not a treatment for weight loss.

Please see Important Safety Information within.

Eliminate FAT IN 9 AREAS

Up to 20% to 25% reduction in fat layer thickness after a single session^{1,*}



CoolSculpting® Elite is the one and only treatment FDA-cleared to eliminate fat in 9 different areas of the body—more than any other nonsurgical fat reduction technology.

¹In a clinical study of 10 subjects, up to 20% to 25% fat layer reduction was seen at 2 and 6 months.

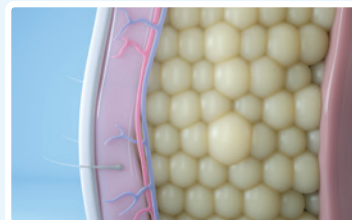
Important Safety Information

This procedure is not for everyone. You should not be treated with **CoolSculpting® Elite** if you suffer from cryoglobulinemia, cold agglutinin disease, or paroxysmal cold hemoglobinuria.

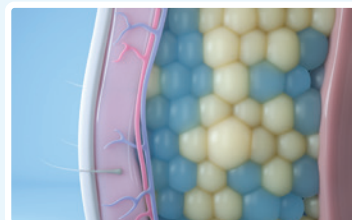
Please see additional Important Safety Information throughout.

TREATED FAT CELLS ARE GONE For Good^{2,†}

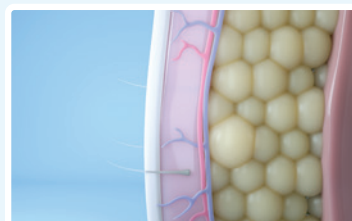
The **CoolSculpting Elite** treatment is an innovative, nonsurgical way to contour your body by safely and effectively freezing stubborn fat away.



Many of us have stubborn fat despite diet and exercise.



CoolSculpting Elite effectively targets and freezes fat cells without damaging the skin or surrounding tissues.



In the weeks that follow, the body naturally processes and eliminates these dead fat cells. Treated fat cells are gone for good.^{2,†}

[†]Study based on an animal model.

ELEVATE YOUR *Experience*

CoolSculpting® Elite is designed to help you achieve your body contouring goals.



- Freeze 2x the stubborn fat and save time with our dual applicators*
- Reimagined applicators are larger and shaped to **better fit your natural curves**^{3-5,†}
- Delivers up to **20% to 25% reduction in fat layer thickness** after a single session^{1,‡}

CoolSculpting Elite treatment requires no surgery and little to no downtime, so you can get back to your busy day.

*Dual applicators with **CoolSculpting Elite** allow more treatments in the same amount of time as compared to using 1 applicator.

†The Elite Curve 240™ applicator features an 18% larger cooling area than the previous generation CoolSculpting applicator.

‡In a clinical study of 10 subjects, up to 20% to 25% fat layer reduction was seen at 2 and 6 months.

Important Safety Information (continued)

Tell your doctor if you have any medical conditions including recent surgery, pre-existing hernia, and any known sensitivities or allergies.

Please see additional Important Safety Information throughout.



Ria was treated with **CoolSculpting Elite** on her upper flanks and lower abdomen. Results may vary.

ABDOMEN AND FLANKS



BEFORE



DURING

4 Weeks After 1st Session



AFTER

8 Weeks After 2nd Session

Results and patient experience may vary.

Q: How much does CoolSculpting Elite treatment cost?

A: Every body is unique and so is every budget. That's why your provider will create a Personalized Treatment Plan and pricing to address your area(s) of concern and help you get the look you want. Talk to your provider today to get started.

Important Safety Information (continued)

During the procedure you may experience sensations of pulling, tugging, mild pinching, intense cold, tingling, stinging, aching, and cramping at the treatment site. These sensations lessen as the area becomes numb.

ABDOMEN



BEFORE



DURING

4 Weeks After 1st Session



AFTER

8 Weeks After 2nd Session

Results and patient experience may vary.

Q: When will I see results?

A: Results may be seen as early as 1 to 3 months after treatment. Treatment plans may take place over 2 or more treatment sessions. Talk to your provider to find out how you can achieve the transformational results you're looking for.

Important Safety Information (continued)

Following the procedure, typical side effects include temporary redness, swelling, blanching, bruising, firmness, tingling, stinging, tenderness, cramping, aching, itching, or skin sensitivity, and sensation of fullness in the back of the throat after submental or submandibular area treatment.

Please see additional Important Safety Information throughout.

ABDOMEN AND FLANKS



BEFORE



DURING

4 Weeks After 1st Session



AFTER

8 Weeks After 2nd Session

Results and patient experience may vary.

FLANKS



BEFORE



DURING

4 Weeks After 1st Session



AFTER

8 Weeks After 2nd Session

Results and patient experience may vary.

Q: What does it feel like during the treatment?

A: During your treatment, a gelpad or a gel and applicator are applied to the targeted area. Applicators that use vacuum suction will draw the tissue into the applicator cup. Controlled cooling is then delivered to the treatment area.

Important Safety Information (continued)

Rare side effects may happen in 1 to 10 out of 10,000 CoolSculpting® Elite treatments (between 0.01% to 0.1%). One such rare side effect is a visible enlargement in the treated area, which may develop 2 to 5 months after treatment and requires surgical intervention for correction.

Please see full Important Safety Information for CoolSculpting® Elite on CoolSculpting.com.

A: (continued)

You may feel intense cold or experience sensations of pulling, mild pinching, tingling, stinging, or cramping temporarily. These sensations typically subside within 10 minutes as the area becomes numb. Many patients read or even take a nap during their sessions. Afterward, patients are usually able to return to normal activities.

Please see additional Important Safety Information throughout.

Real PATIENTS

BRA/BACK FAT AND FLANKS



BEFORE



DURING

4 Weeks After 1st Session



AFTER

8 Weeks After 2nd Session

Results and patient experience may vary.

Real RESULTS

UPPER ARM



BEFORE



DURING

4 Weeks After 1st Session



AFTER

8 Weeks After 2nd Session

Results and patient experience may vary.

Q: How many CoolSculpting® Elite treatments will I need?

A: Many patients may need 2 or more treatment sessions to help achieve the look they want. We will develop a Personalized Treatment Plan based on your goals and budget to help you achieve your desired results.

Uses

CoolSculpting® Elite is FDA-cleared for the treatment of visible fat bulges in the submental (under the chin) and submandibular (under the jawline) areas, thigh, abdomen, and flank, along with bra fat, back fat, underneath the buttocks (also known as banana roll), and upper arm. It is also FDA-cleared to affect the appearance of lax tissue with submental area treatments. CoolSculpting® Elite is not a treatment for weight loss.

Q: Is CoolSculpting Elite treatment safe?

A: CoolSculpting Elite has been cleared by the FDA to effectively treat visible fat bulges in 9 different areas of the body. CoolSculpting Elite is safe and effective in reducing fat in these areas.

[Learn more at coolsculpting.com](https://www.coolsculpting.com)

Please see additional Important Safety Information throughout.

Ask your provider if
CoolSculpting® Elite
is right for you, or go
to coolsculpting.com to
learn more.

Glen was treated with
CoolSculpting Elite
on his lower flanks.
Results may vary.



Get rewarded on your **CoolSculpting Elite** treatment

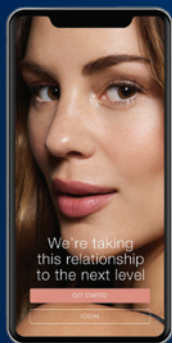
Allē is an exclusive patient loyalty program that helps you earn and redeem rewards on Allergan Aesthetics products.

Join and Explore

Become a member in a few simple steps.

Earn and Save

Earn points and redeem them for savings on Allergan Aesthetics products and other in-office treatments.



Unlock all that Allē offers—visit
Allē.com to join.

 **coolsculpting® ELITE**

Before-during-after photos courtesy of Bodify® and Steven Sorr, NMD.

References: **1.** Coleman SR, Sachdeva K, Egbert BM, Preciado J, Allison J. Clinical efficacy of noninvasive cryolipolysis and its effects on peripheral nerves. *Aesthetic Plast Surg.* 2009;33(4):482-488. **2.** Zelickson B, Egbert BM, Preciado J, et al. Cryolipolysis for noninvasive fat cell destruction: initial results from a pig model. *Dermatol Surg.* 2009;35(10):1462-1470. **3.** Data on file, Allergan, April 15, 2020; Summary of Clinical Fit and Function Study Testing of V003 Cups (CS-305218-B). **4.** Data on file, Allergan; V3 Applicator Specifications. **5.** Data on file, Allergan; Applicator Specifications.

**Allergan
Aesthetics**
an AbbVie company

COOLSCULPTING® COOLSCULPTING® ELITE, and the Snowflake Design are trademarks of Zeltiq Aesthetics, Inc., an AbbVie company. Allē® is a registered service mark of Allergan, Inc., an AbbVie company. All other trademarks are the property of their respective owners.
© 2021 AbbVie. All rights reserved. CSC141998-v3 12/21 014562